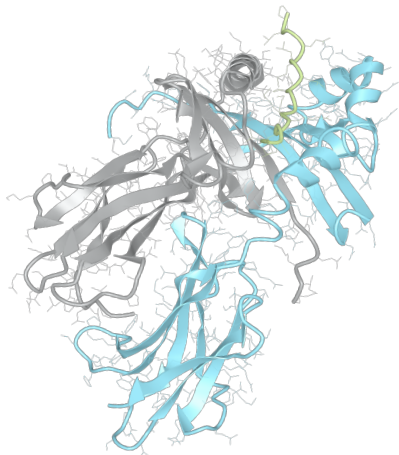


# Product datasheet



## sHLA– DQB1\*04:02 DQA1\*04:01

DQB1\*0402, DQB10402, DQB1\*04, DQB04, DQ4  
DQA1\*0401, DQA10401, DQA1\*04, DQA04

<b>Serological Name</b>	DQ4
<b>Peptide Load</b>	Endogenous
<b>Modification</b>	Unmodified
<b>Conjugation</b>	Unconjugated
<b>SKU</b>	DQB10402/DQA10401

### Product Description

<b>Allele Name</b>	DQA1*04:01 DQB1*04:02
<b>HLA Class</b>	HLA Class II
<b>HLA Gene Locus</b>	HLA-DQ
<b>Alternative Allele Name A Chain</b>	DQA1*0401, DQA10401, DQA1*04, DQA04
<b>Alternative Allele Name B Chain</b>	DQB1*0402, DQB10402, DQB1*04, DQB04, DQ4
<b>Description</b>	Recombinant, truncated Class II soluble Human Leukocyte Antigen (sHLA), naturally folded and glycosylated, loaded with endogenous peptides.
<b>Serological Name</b>	DQ4
<b>Serological Split</b>	-
<b>Allele Frequency [World Population]</b>	
<b>A chain</b>	7.1%
<b>B chain</b>	7.1%

### Associated products

[DQB10402/DQA10401bio](#)  
[DQB10402/DQA10401pe](#)

## Product Specification

Product name	HLA-DQB1*04:02/DQA1*04:01
HLA Species	Human
Host Cell Line Species	Mouse
Clone Designation	EP401-SSC G10
Tail Specification	ZP
Peptide Load	Endogenous
Modification	Unmodified
Conjugation	Unconjugated
Complexity	Monomer
Protein Format	Recombinant, truncated, zipper-stabilized, soluble, non-modified, non-labeled, endogenously loaded
Storage Temperature	4°C (This product should be stored undiluted)
Form	Liquid
Concentration	1000.0 µg/µl
Formulation	PBS/0.02% Sodium Azide
pH	7.4
Purification Method	Affinity Chromatography
Grade	Research Use Only [RUO]
Authentication Verification	Sequence Based Typing

## Protein Sequences

Alpha Chain Sequence	EDIVADHVAS YGVNLYQSYG PSGQYTHEFD GDEQFYVDLG RKETVWCLPV LRQFR.FDPQ FALTNIATVK HNLNLIKRS NSTAATNEVP EVTVFSKSPV TLGQPNTLIC LVDNIFPPVV NITWLSNGHS VTEGVSETSF LSKSDHSFFK ISYLTFLPSA DEIYDCKVEH WGLDEPLLKH WEPEIPAPMS EVDGGGGGAQ LEKELQALEK ENAQLEWELQ ALEKELAQ
Beta Chain Sequence	RDSPEDFVFQ FKGMCYFTNG TERVRGVTRY IYNREEYARF DSDVGVYRAV TPLGRDLDAEY WNSQKDILEE DRASVDTVCR HNYQLELRTT LQRRVEPTVT ISPSRTEALN HHNLLVCSVT DFYPAQIKVR WFRNDQEETT GVVSTPLIRN GDWTFQILVM LEMTPQRGDV YTCHVEHPSL QNPTIIVEWRA QSESAQSKVD GGGGAQLKK KLQALKKKNA QLKWKLQALK KKLAQ

## Related Products

[DQB10401/DQA10401](#)  
[DQB10301/DQA10201](#)  
[DQB10602/DQA10102](#)  
[DQB10302/DQA10201](#)

## Applications

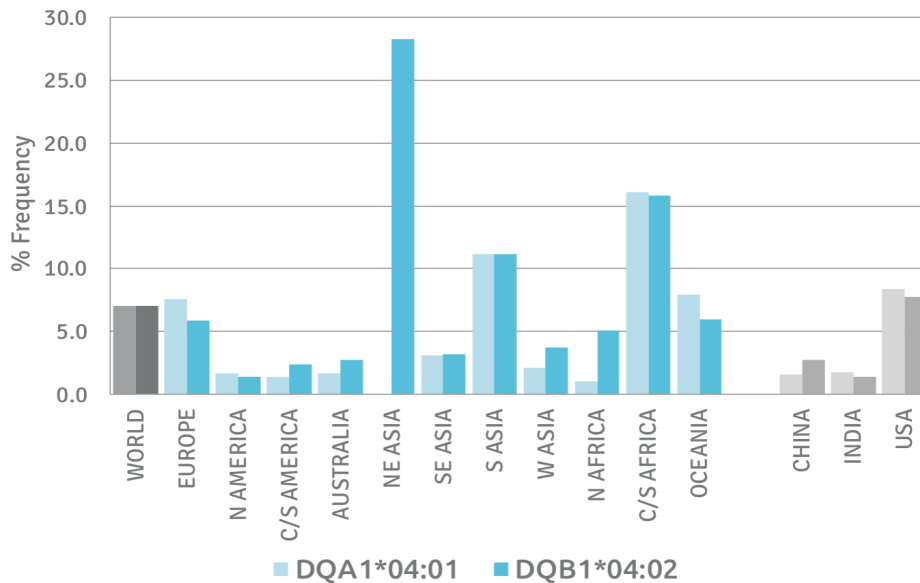
HLA Sandwich ELISAs  
 HLA Direct ELISAs  
 HLA-Sera Antibody Assays  
 HLA Controls in ELISA Assays  
 HLA Assay Standards  
 HLA Blocking Assays  
 HLA Neutralizing Assays  
 HLA Competition Assays  
 HLA Bead Assays  
 HLA Immunization Procedures

## Recommended Antibodies

-

## Allele Frequency

### Worldwide Allele Frequency



Please note:

ALL PRODUCTS ARE FOR RESEARCH USE ONLY. NOT FOR COMMERCIAL USE IN DIAGNOSTIC PROCEDURES.  
 For more information, please visit our Policies section on our website. For licensing inquiries, please contact

[licensing@hlaprotein.com](mailto:licensing@hlaprotein.com)

HLA Protein  
 PURE PROTEIN LLC

**Eplet Assignments**

**DQB1\*04:02**

Eplet	Polymorphic Residues	Antibody Reactivity
3S	3S	
9F	9F	
13GM	13G14M	
23R	23R	
37YA	37Y38A	
45G	45G	
45GV	45G46V	Yes
46VY	46V 52P 28T	Yes
55R	55R	Yes
56L	56L 71D	Yes
66D	66D67I	
74S	74S 26G	Yes
75V	75V	
77T	77T	Yes
84QL	84Q 86E 87L 89T 90T 125A	Yes
130R	130R	
135D	135D	
167R	167R	
182N	182N	Yes
185I	185I	

**Eplet Assignments**

**DQA1\*04:01**

Eplet	Polymorphic Residues	Antibody Reactivity
2D	2D 199A	Yes
25YT	25Y26T	
40GR	40G 47C 50V 51L	Yes
61FT	61F 64T 55R	Yes
66IT	66I69T	
75I	75I 161D 163I	
75IL	75I76L	
76L	76L	
129H	129H	
160A	160A	
160AD	160A161D	
175E	175E	